



Data for three-month period 1 October - 31 December 2017

Issued April 2018

The quarterly performance snapshots show injury and incident data provided to the Department by the minerals sector for a three-month period. The snapshots can be used by employers and workers to assist in the development and promotion of safe work practices on mining operations.

For more information about injuries and incidents in the minerals sector, visit our website www.dmirs.wa.gov.au

@DMIRS_WA

Department of Mines, Industry Regulation and Safety

Injuries by age

Age range with the **greatest percentage** of injuries was **30-39 years (25%)**

30-39 years



Age range 20-29 was 2nd highest (22%)

Injuries by number



227
serious injuries

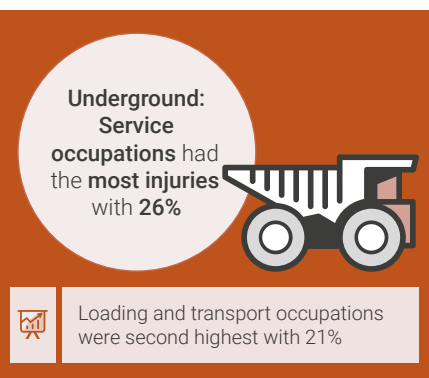
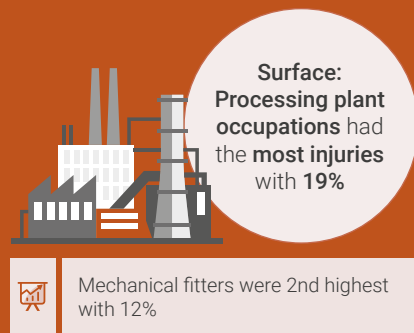


72
minor injuries

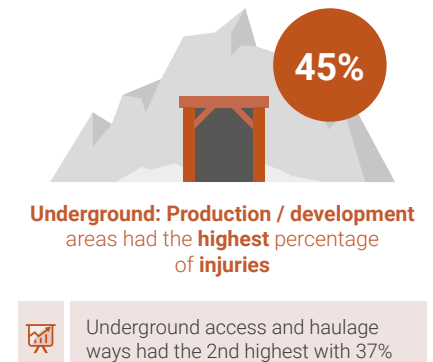


3
non-disabling injuries

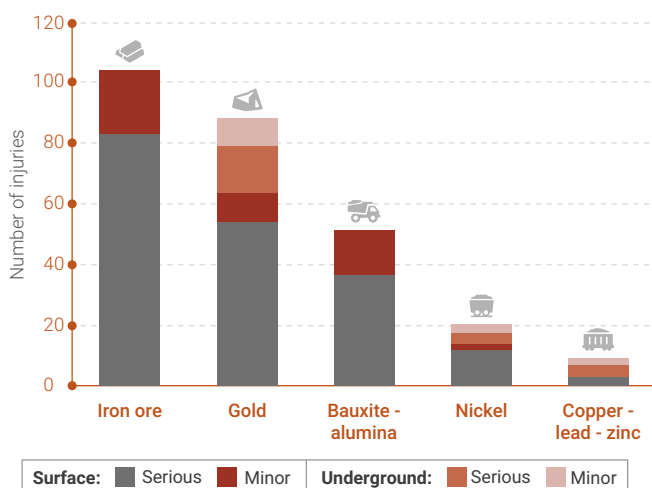
Injuries by occupation



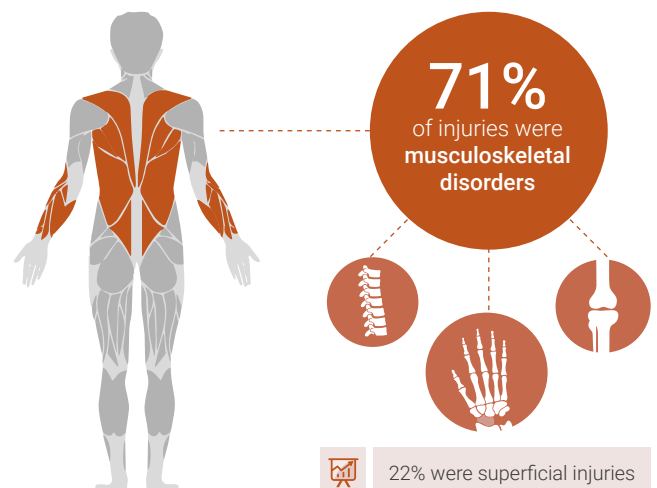
Injuries by location



Injuries by commodity (top 5)



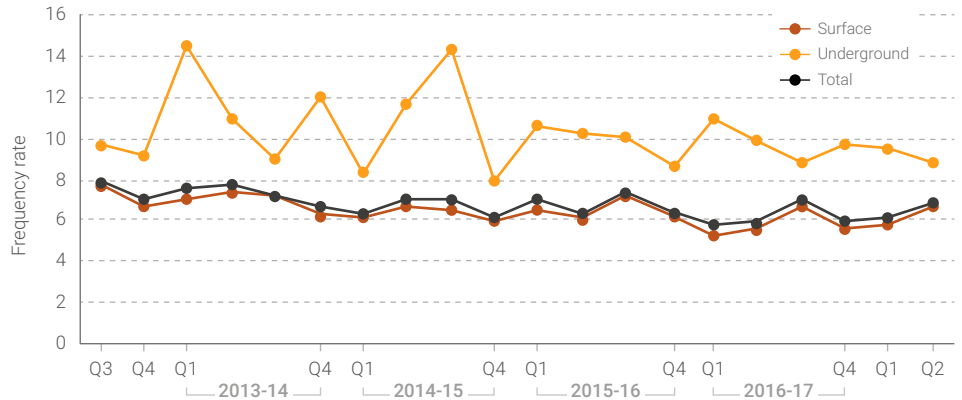
Injuries by nature



Injury frequency rate (number of injuries per million hours worked)

Last quarter, the overall total injuries increased by 13%.

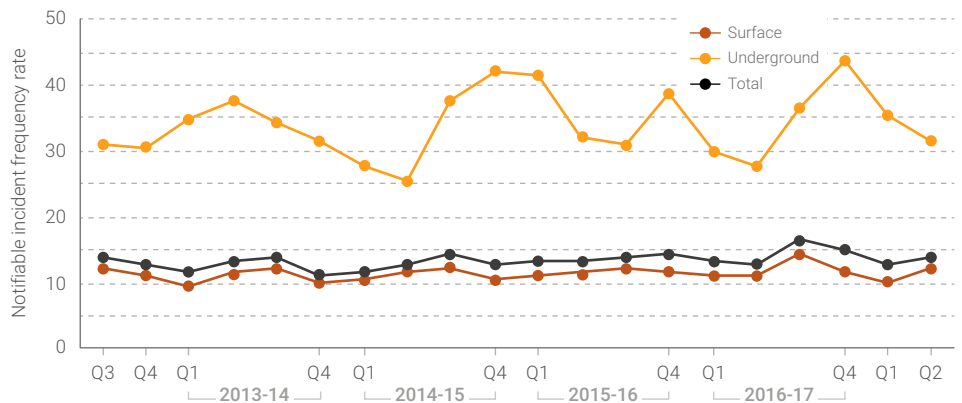
Make sure you can recognise the hazards associated with your workplace and the work you do, understand the risks, and know how to implement the control measures.



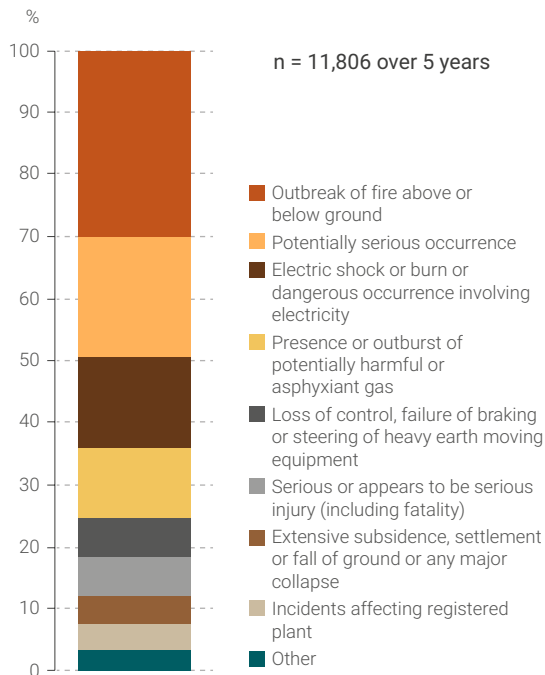
Notifiable incidents frequency rate (number of incidents per million hours worked)

Specific types of incidents, including near misses, are required to be reported to the Department. This reporting is important to identify trends and clusters of incidents that need to be addressed to help prevent injuries.

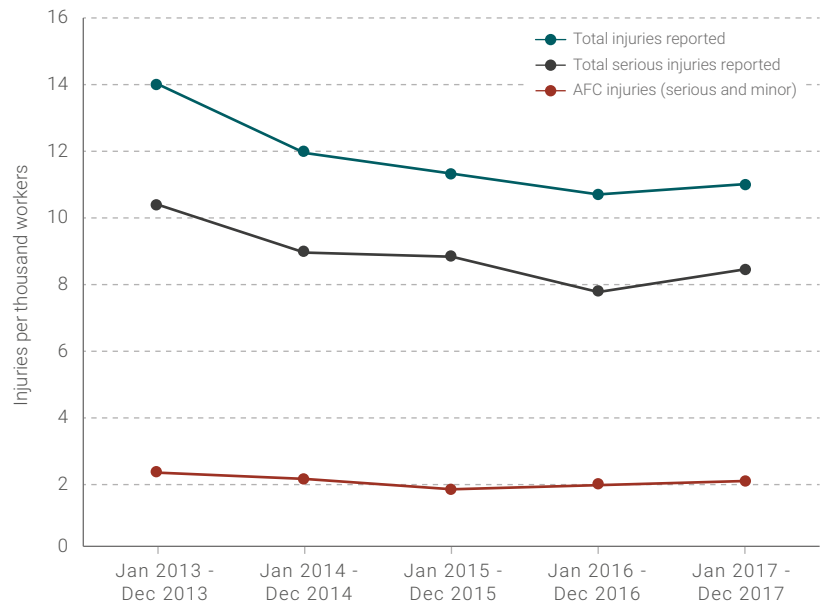
What is the reporting culture like at your site?



Notifiable incidents by reporting category



High-consequence serious injuries (amputations, fractures and crushing)



For further information, see *Analysis of serious injury data in the Western Australian mining industry July-December 2013*