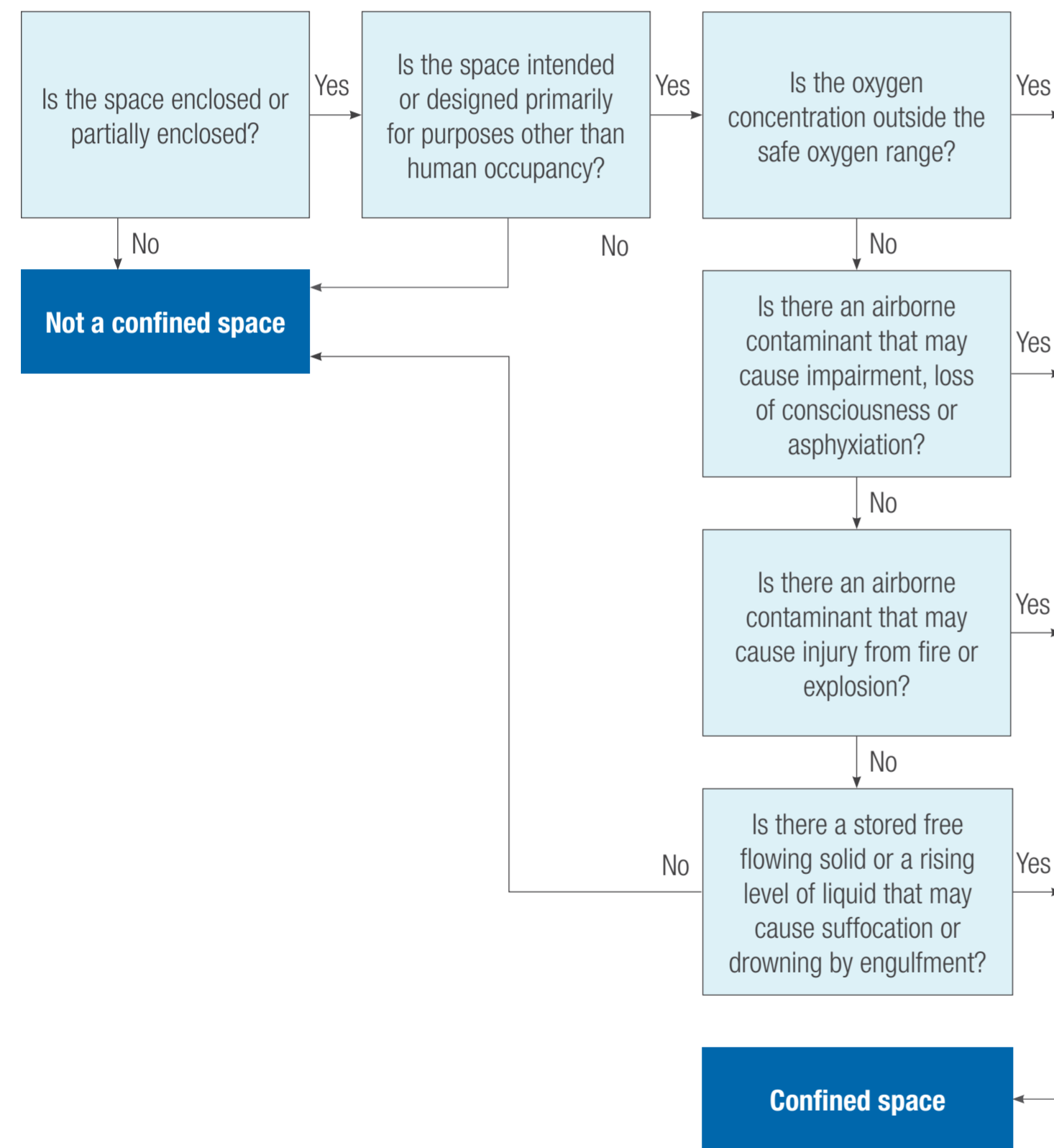


Confined space entry

What is a confined space?

Refer to Australian Standard AS 2865:2009 for details, as per regulation 4.2 of the Mines Safety and Inspection Regulations 1995
For further information, see the Mines Safety Matters brochure on working in confined spaces



Checklist

1.	Do you need to enter the confined space?	<input type="checkbox"/> Yes	<input type="checkbox"/> No
2.	Are the entry and exit points large enough to allow rescue?	<input type="checkbox"/> Yes	<input type="checkbox"/> No
3.	Are the people entering the confined space trained and assessed as competent?	<input type="checkbox"/> Yes	<input type="checkbox"/> No
4.	Are emergency response personnel aware of the confined space entry being made and the number of people entering?	<input type="checkbox"/> Yes	<input type="checkbox"/> No
5.	Is the risk assessment for the confined space completed?	<input type="checkbox"/> Yes	<input type="checkbox"/> No
6.	Have the people entering the confined space task the risk assessment?	<input type="checkbox"/> Yes	<input type="checkbox"/> No
7.	Do you have written authority to enter the confined space?	<input type="checkbox"/> Yes	<input type="checkbox"/> No
8.	Are you recording the presence of people inside the confined space?	<input type="checkbox"/> Yes	<input type="checkbox"/> No
9.	Are signs and barriers erected to prevent unauthorised entry?	<input type="checkbox"/> Yes	<input type="checkbox"/> No
10.	Is there a sentry or standby person on duty or an equivalent system of work (e.g. continuously monitored CCTV)?	<input type="checkbox"/> Yes	<input type="checkbox"/> No

If you answered NO to any of these questions, DO NOT ENTER!



- ### What should a confined space risk assessment include?
1. Hazard identification for the confined space
 2. Hazard identification for the task required to be conducted
 3. Identification of all isolation points. This includes all energy sources and hazardous or process services (e.g. introduction of any materials, contaminants or agents)
 4. Competency requirements for task (e.g. confined space entry, use of breathing apparatus and monitoring equipment)
 5. Control measures used to eliminate or minimise the hazards and risks identified (e.g. purging requirements, atmospheric testing and monitoring equipments, ventilation plan)
 6. Emergency response plan